

CITY OF



Residential Brush Collection

Street Department Right of Way Division

815 N. Kilgore St.
Kilgore, Texas 75662

Office Hours

Mon. thru Fri.

8:00 a.m. to 5:00 p.m.

903-984-5081

www.cityofkilgore.com

Brush Handling

The City Council recently adopted an ordinance changing the way we will handle brush collection. The City has purchased a new truck similar to the one pictured below.



We will continue picking up storm debris and also beginning in October of 2009 we will pick up brush that has been placed by the homeowner in the front yard or side yard behind the curb or outside of the roadway (i.e., close but not in the road).

We will be working toward picking up brush on a rotating schedule covering one quadrant of the city each week. The first Monday of each month begins week one. See the map on back or go to www.cityofkilgore.com for a map and schedule. Calling will no longer be required and there will not be a specific charge for each brush pile.

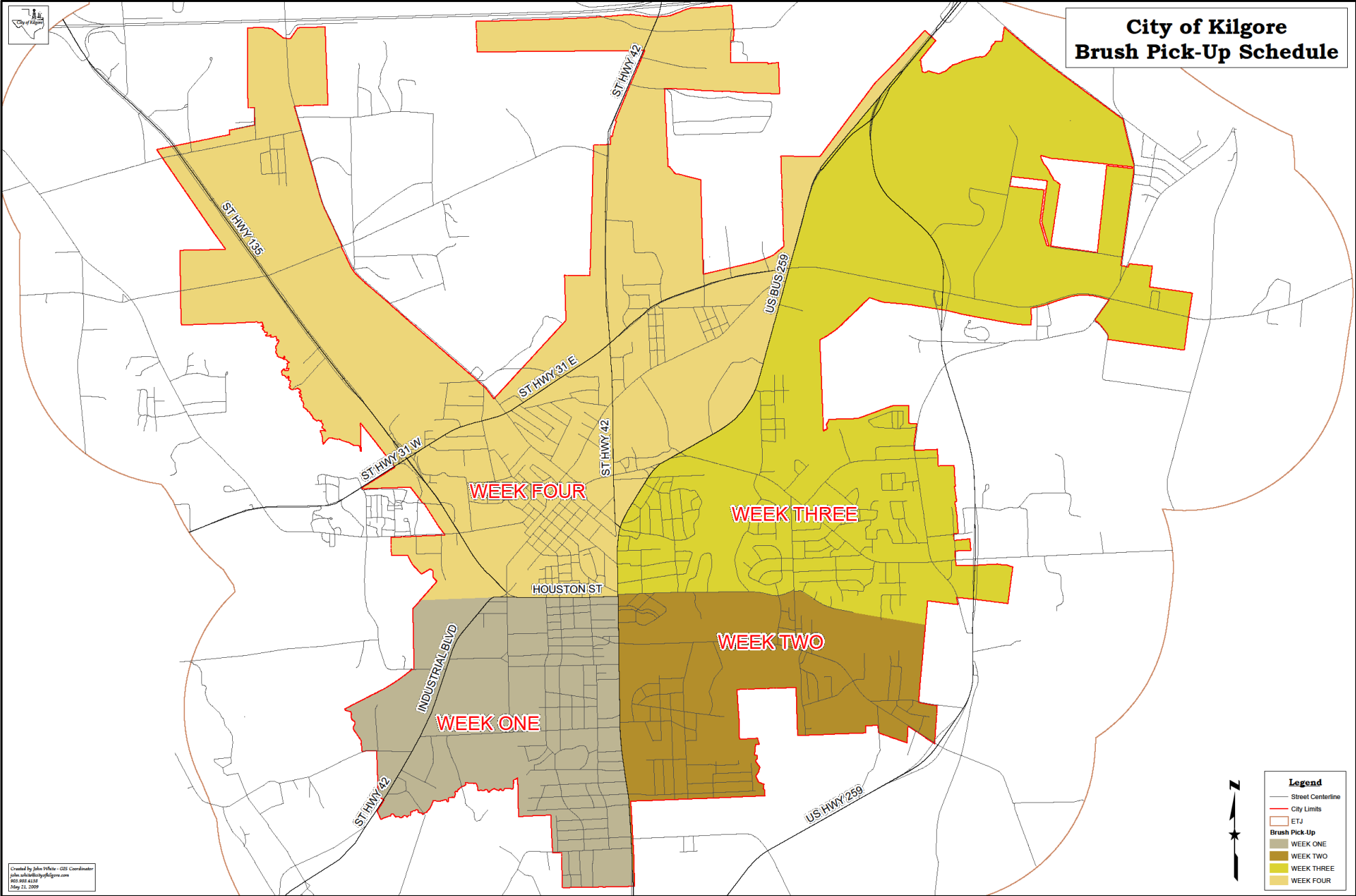
Brush stacked or piled in alleys or streets, obstructing public right of ways, shall be a violation of this article, and subject to citation and fines. It will not be picked up until appropriately placed.

The City of Kilgore will not pick up brush or trees that have been cut by a contractor working for the homeowner. The contractor shall be responsible for removal and disposal of any and all work performed.

Should you have questions, please call the Street Department at (903) 984-5081.

- All limbs or brush should be placed adjacent to the street behind the curb or off of the pavement.
- Do not place brush on top of water meters, behind vehicles, mail boxes, utility poles or under guy wires.
- Try and place brush early in the week scheduled for your area. This will prevent brush from covering the grass for long periods of time.
- Limbs should be no larger than 12 inches in diameter and no longer than 10 feet.
- **COMMERCIALLY** cut trees and lot clearing will not be collected.
- **RESIDENTIAL BRUSH & LIMBS ONLY**, no leaves, grass clippings, pine straw, no household garbage, furniture, carpet, lawn equipment, metal, appliances, construction materials, glass, concrete, lumber, cross ties, fence posts, landscape timbers, or other processed wood.

City of Kilgore Brush Pick-Up Schedule



Created by John White - GIS Coordinator
 john.white@cityofkilgore.com
 905.881.4139
 14 May 21, 2009

Legend

- Street Centerline
- City Limits
- ETJ
- Brush Pick-Up**
- WEEK ONE
- WEEK TWO
- WEEK THREE
- WEEK FOUR